



The **FATBOY**

Tramp Oil Separator

For the separation & removal of oil from aqueous solutions

The Best Tramp Oil Separator Available

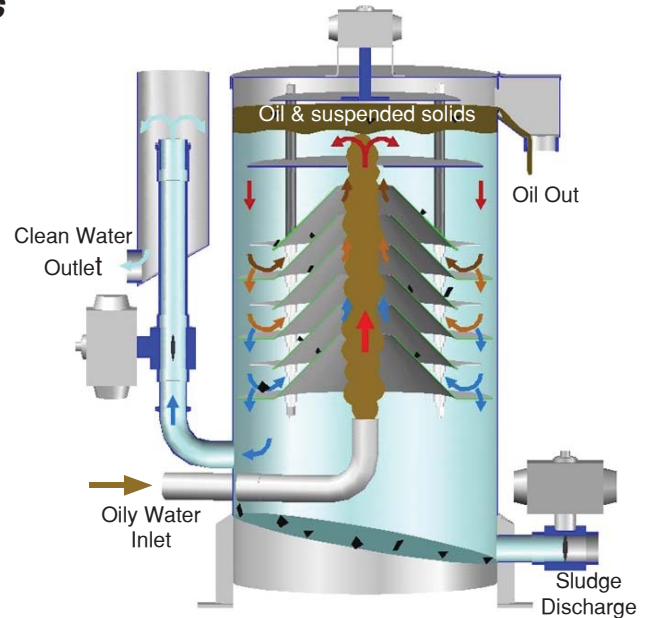
The **FATBOY** Tramp Oil Separator has a small footprint but will out perform any other tramp oil-water separator on the market. This compact unit will flow over 10 GPM while separating wastewater streams containing high amounts of oil, grease, fats and low density suspended solids. The **FATBOY** can readily be configured to your specific application.

Don't dispose! Remove - Recover - Recycle.

Fluid Applications



- Blank washers
- Coil washers
- Machine tool coolant
- Marine & bilge
- Metal stamping
- Oil spill recovery
- Parts washing
- Process water
- Quench oil systems
- Restaurant FOG
- Steel mill water
- Steel treating
- Wash-down pits
- Wastewater



High Concentrations of Oil - The **FATBOY** will handle an accidental ingress of 100% oil or fuel.

Effective Cleaning -The **FATBOY** can clean itself of settled solids, chips and fines as well as oil and grease.

Efficient Removal of Suspended Solids The suspended solids are encapsulated by oils and rise to the top of the separator for discharge with the oil.

Automatic, Manual and Modular Systems.

The **FATBOY** can be custom designed around the specific applications and flowrates required including completely automatic & programmable units. Electric or pneumatic pumps are available.

We offer units for on site testing.
Please contact us for details.

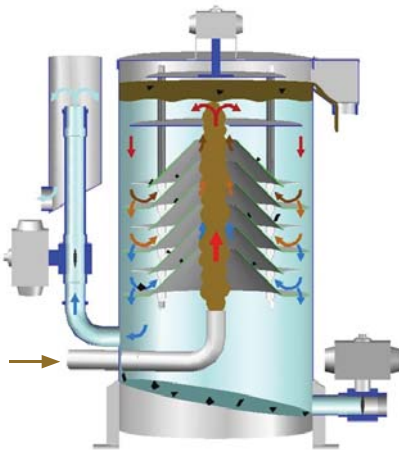
It works because it stays clean

The **FATBOY** contains multiple conical elements which we manufacture from high grade oleophilic materials. The oily water is delivered under pressure into the center of these elements flowing upward toward the top of the vessel. Once at the top any free oil, grease and low density suspended solids are allowed to flow over a weir and are discharged to a collection point.

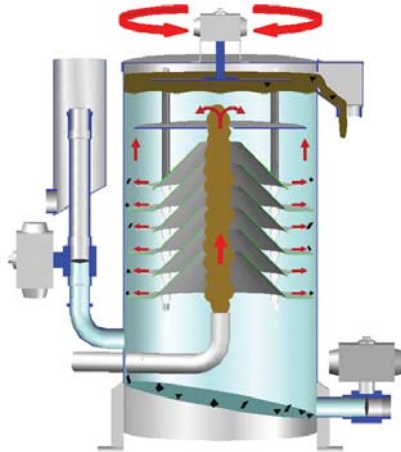
The partially cleaned fluid is directed to the outside perimeter of the elements. It then follows a torturous path cascading down and around each cone continually stripping the smallest oil particles from the water.

The lower density fluid is drawn up the inclined oleophilic surface of the cone element and back into the lower-pressure center of the separator where it joins the incoming fluid and is redirected to the top of the vessel. Convection currents are created within the cone elements by the density variation down the fluid column and the upward flow of the incoming oily water. The treated fluid enters the output leg free of contaminants and flows up and out of the system.

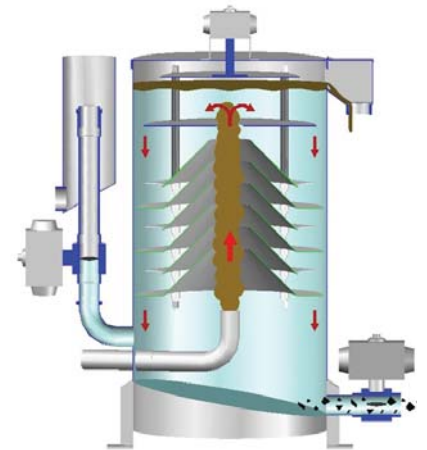
Fully Adjustable Timed Cleaning Cycles - Auto - Cleaning - Discharge



The oily water enters the **FATBOY** unit, separating and discharging the oil continuously while returning the cleaned fluid back to the sump.



The cones rotate back & forth to dislodge any suspended solids, oils and greases while the inlet closes forcing the fluid to upflow allowing the oils and suspended solids to discharge to waste.



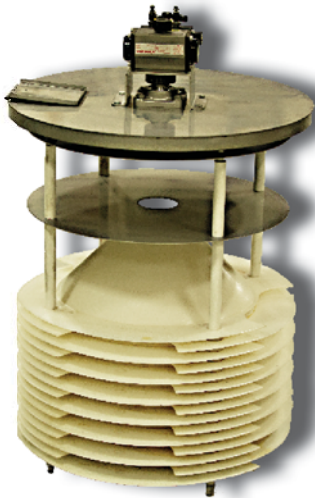
The discharge valve opens to purge the heavy & settled particulate that accumulated in the bottom.

The above operating sequence is representative of the automated **Fatboy**. The manual version is similar except the valves and cleaning of the cones are initiated manually.

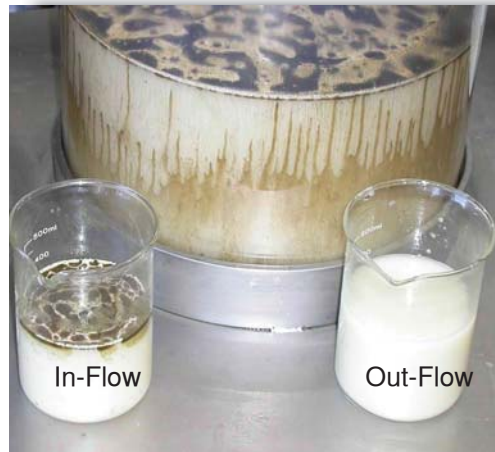
The *FATBOY*

Tramp Oil Separator

For the separation & removal of oil from aqueous solutions



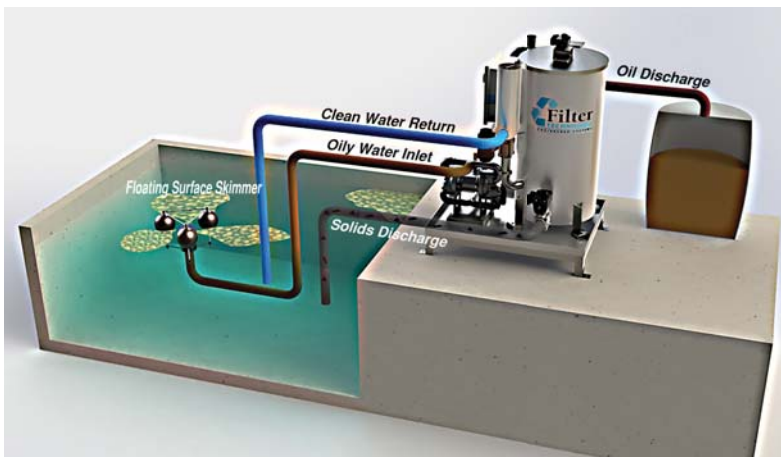
Fatboy automated cone assembly with over 85 square feet of surface area.



Water based tool coolant contaminated with tramp oil and the same coolant after the *Fatboy* with oil removed.



Floating skimmer in a pit containing a high concentration of oil in water.



Typical pit or tank installation with a floating oil skimmer.



Floating & Fix Skimmers

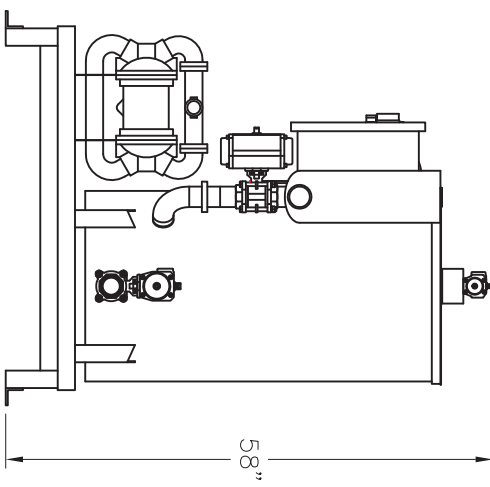
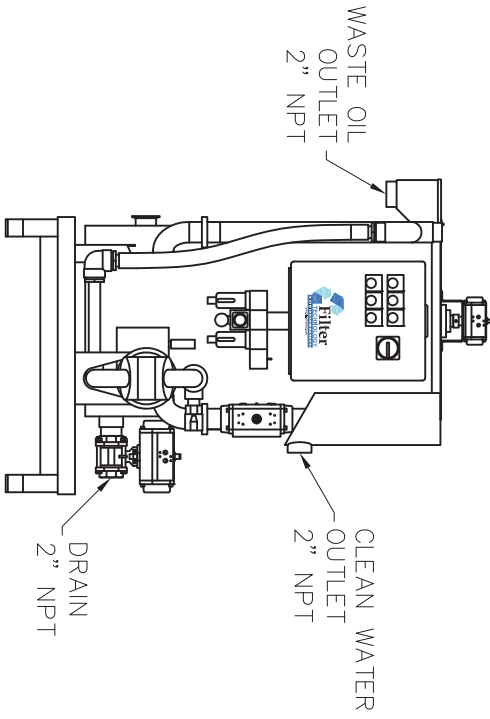
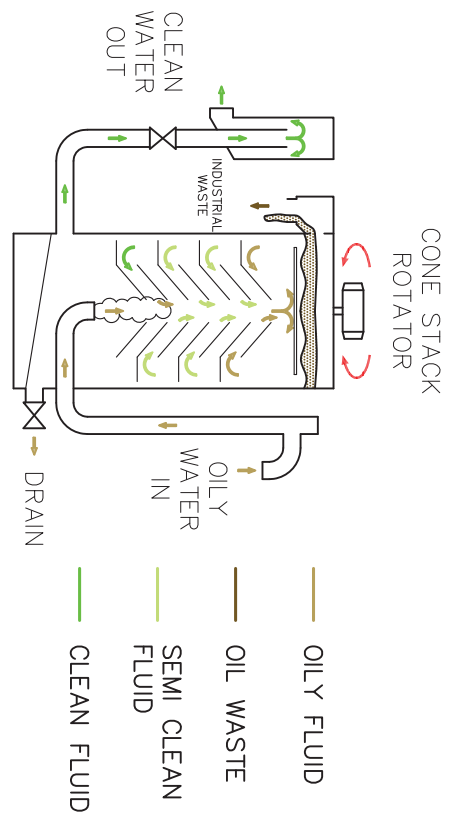
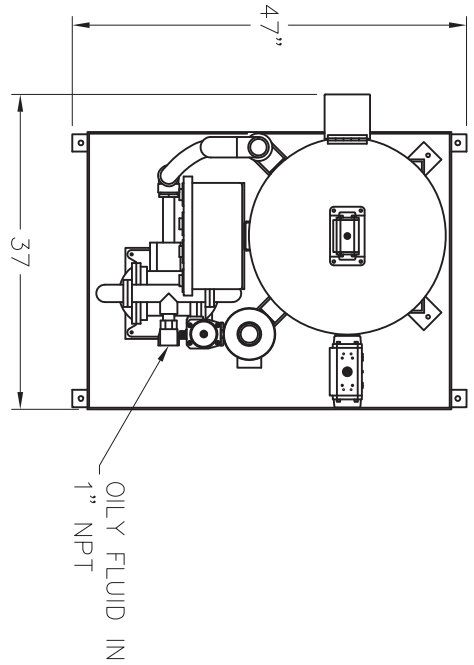
Our Skimmer Heads are designed to float on the surface and have a triple weir to take a deep cut of the liquid to get the maximum amount of floating material from the water.

Standard Features

- HD 304 Stainless Steel Construction
- Raised platform with containment pan
- Automated 24 VDC controls
- SS Air actuated valves
- Filter/regulator air set with shut-off
- Pneumatic flap valve pump
- Surface suction skimmer

Available Options

- Manual Unit
- Stainless pump
- Electric pump
- Solids discharge pump
- Waste oil transfer pump
- Fixed or floating skimmer



VOLUME: 60 GAL
 EMPTY WEIGHT:
 APPROX 420 lb

REVISIONS

LTR	DESCRIPTION	DATE	DAE INT
A	UPDATED TO MATCH NEW STANDARD	4/30/14	DAE INT

COMPACT VERTICAL SEPARATOR



CUSTOMER:	
APPLICATION:	
DRAWN BY: DAE	DATE: 8/27/12
SHEET: 1 of 1	SCALE: DO NOT SCALE
DRAWING: S-SEP 8012-01-A	

THIS DOCUMENT IS THE EXCLUSIVE AND CONFIDENTIAL PROPERTY OF FILTER TECHNOLOGY LLC. IT IS NOT TO BE COPIED, REPRODUCED OR DELIVERED TO OTHERS IN PART OR IN WHOLE WITHOUT THE EXPRESSED WRITTEN PERMISSION OF FILTER TECHNOLOGY LLC.